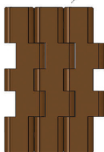
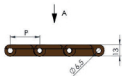
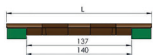
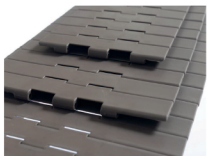
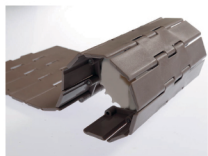


821 DÜZGÜN DOĞRUSAL AĞIR TIP ÇİFT MENTEŞELİ ASETAL BAKLA BANT

 DİŞLİ : 395



mm									
StokKod [Stock Code]	RM	P	L	Malzeme/Material	PIN	Kg / m	Metre/Meter (m)	Feet (ft)	
821 B00 190	-	38,1	190,5	Beyaz Asetal White Acetal	Paslanmaz Çelik Stainless Steel AISI 304	2,5	3,048	10	
821 B00 254	-	38,1	254,0	Beyaz Asetal White Acetal	Paslanmaz Çelik Stainless Steel AISI 304	2,95	3,048	10	
821 B00 304	-	38,1	304,8	Beyaz Asetal White Acetal	Paslanmaz Çelik Stainless Steel AISI 304	3,25	3,048	10	
821 G00 190	-	38,1	190,5	Gri Asetal Gray Acetal (D)	Paslanmaz Çelik Stainless Steel AISI 304	2,5	3,048	10	
821 G00 254	-	38,1	254,0	Gri Asetal Gray Acetal (D)	Paslanmaz Çelik Stainless Steel AISI 304	2,95	3,048	10	
821 G00 304	-	38,1	304,8	Gri Asetal Gray Acetal (D)	Paslanmaz Çelik Stainless Steel AISI 304	3,25	3,048	10	
821 K00 190	-	38,1	190,5	Kahverengi Asetal Brown Acetal (LF)	Paslanmaz Çelik Stainless Steel AISI 304	2,5	3,048	10	
821 K00 254	-	38,1	254,0	Kahverengi Asetal Brown Acetal (LF)	Paslanmaz Çelik Stainless Steel AISI 304	2,95	3,048	10	
821 K00 304	-	38,1	304,8	Kahverengi Asetal Brown Acetal (LF)	Paslanmaz Çelik Stainless Steel AISI 304	3,25	3,048	10	
821 S00 190	-	38,1	190,5	Siyah Asetal Black Acetal	Paslanmaz Çelik Stainless Steel AISI 304	2,5	3,048	10	
821 S00 254	-	38,1	254,0	Siyah Asetal Black Acetal	Paslanmaz Çelik Stainless Steel AISI 304	2,95	3,048	10	
821 S00 304	-	38,1	304,8	Siyah Asetal Black Acetal	Paslanmaz Çelik Stainless Steel AISI 304	3,25	3,048	10	



Hatve	38.1 mm
Bant Kalınlığı	13 mm
Açıklık Oranı (%)	Kapalı Yüzey (%60)
Bakla Geniřliđi	(bant geniřlikleri tablodadır)
Renk	Kahve / Gri / Beyaz / Siyah
Temizlenebilirlik	Orta (FDA gıdaya uygunluđuk)
PİM Çapı	6 mm