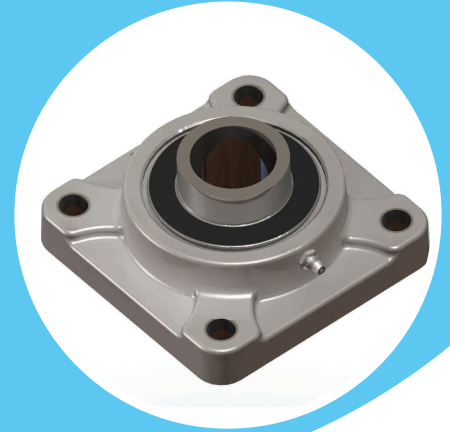
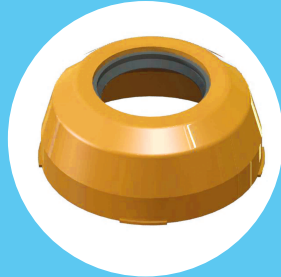
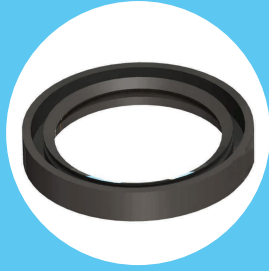
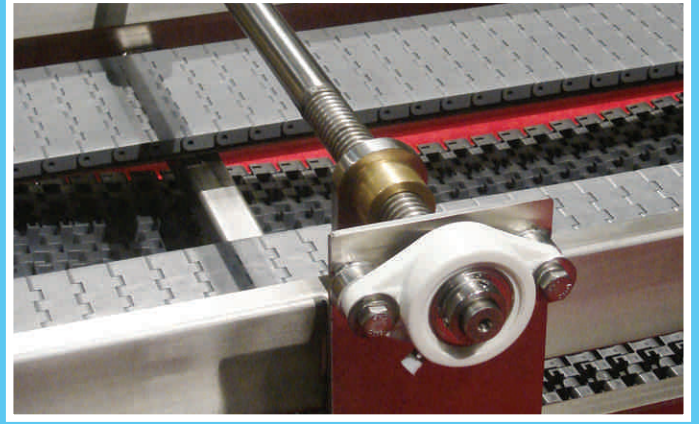
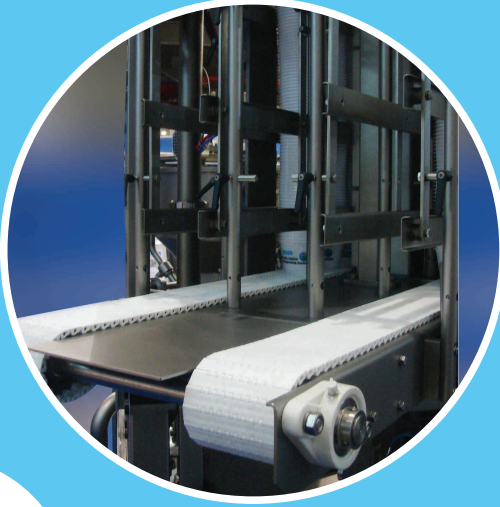
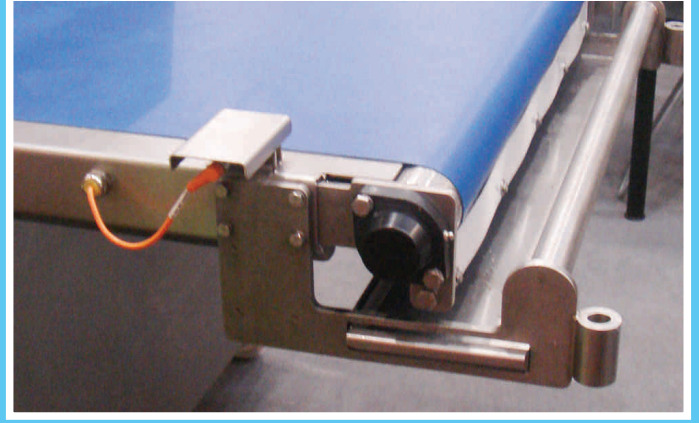




ÇAĞRI[®]
ENDÜSTRİ A.Ş.

ALHAN[®]



ÇAĞRI[®]
ENDÜSTRİ A.Ş.
DAĞITICI (DISTRIBUTOR)

Davutpaşa Cad. Nu: 14/2
34010 Topkapı - İSTANBUL - TÜRKİYE
Tel.: +90 212.444 00 42 - 544 50 55
Belgegeçer(Fax): +90 212. 567 14 16 - 501 54 08
www.alhan-cagri.com e-posta (e-mail): info@alhan-cagri.com



ÇAĞRI[®]
ENDÜSTRİ A.Ş.

ALHAN[®]

PLASTİK RULMAN YATAKLARI/PLASTIC BEARINGS HOUSING

UNSURLAR/FEATURES

- ◆ Paslanma, Çüreme, Aşınma Yok/No corrosion
- ◆ FDA & FSDA onaylı/FDA & FSDA approval
- ◆ Döküm yatakları ile ölçeler aynı/Interchangeable with cast iron standarts units
- ◆ Bakım yok/Maintenance free
- ◆ Sıcaklık aralığı: -35 ile 102°/ Temperature work from -35 to 102 degree
- ◆ Gerilme dayanımı kopmadaki (ASTM 0630) etkileyici 17.300 PSI/Tensile strength at break (ASTM 06300) is an impressive 17.300 PSI
- ◆ Mükemmel mekanik dayanım kararları ve ölçü değişmezliği/Excellent mechanical strength' stiffness & dimension stability
- ◆ İstenirse paslanmaz yağdanlık ve burç/Option stainless greaser and bushing
- ◆ Katı geometrisi ve plastik hammeddesi kur ve bakteri türümeye engel/Solid base prevent dirt & bacteria Reluable

 **Döküm Yataktan %30 daha kuvvetli yükler için.**
More then %30 powerfull from cast housing for loading.

HPL RULMAN YATAKLARI / BEARING INSERT

M PBT+GF



**Yeni
New**



FBL RULMAN YATAKLARI / BEARING INSERT

M PBT+GF



TPL RULMAN YATAKLARI / BEARING INSERT

M PBT+GF

